



FEATURED PRODUCTS

Wintertime Solutions





Road Runner Ice Melt



Features:

- Effectively melts ice down to -15 °F
- Contains calcium chloride, the fastest dry de-icer on the market
- Begins melting on contact
- Blended to melt ice at the right price
- Needs fewer applications than rock salt
- Colorless and odorless

Item No.	Mfr. No.	Size (lb)	Container
101824680	50P-RR	50	Pail
101836515	50B-RR	50	Bag



Green Scapes Ice Melt



Features:

- Effectively melts ice down to -10 °F
- Each granule is encapsulated with Liquid Ice Ban
- Enhanced with a green color indicator for easy application
- Requires fewer applications than rock salt
- Safer for concrete, vegetation and pets when used correctly
- Environmentally friendly

Item No.	Mfr. No.	Size (lb)	Container
101822560	50B-GS	50	Bag



Industrial Blue Ice Melt



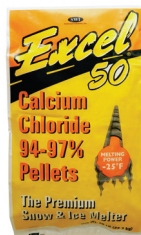
Features:

- Effectively melts ice down to -10 °F
- Enhanced formula includes calcium chloride pellet for instant melting power
- Sprayed with a blue color indicator for easy application
- Encapsulated with SWI20 corrosion inhibitor to protect surfaces

Item No.	Mfr. No.	Size (lb)	Container
101822078	50B-IB	50	Bag



Calcium Chloride Pellets



Features:

- Effectively melts ice down to -25 °F
- Begins melting on contact
- Quickly penetrates through frozen surfaces to undercut the ice
- Most efficient de-icer on the market – melts more so application rate is less
- Colorless and odorless

Item No.	Mfr. No.	Size (lb)	Container
101824755	50B-CCP	50	Bag



ICE BREAKER GREEN®

Ice Breaker GREEN® is most effective as an ice blocker and is perfect for high-priority walkways. Its special formula stops ice, snow and frozen material from bonding to surfaces.



Features:

- Safe on all surfaces
- One gallon covers up to 1,500 sq ft
- 90% less corrosive than salt
- Will not track or stain

Item No.	Mfr. No.	Size (gal)	Container
101949522	IBG005	5	Pail
101970493	IBG055	55	Drum
101461744	IBG330	330	Tote



Liquid Heat™ De-Icer

Liquid Heat is a conveyor belt de-icer that penetrates and de-ices existing snow and ice buildups. Prevents any subsequent ice and snow from adhering to conveyor belts, rollers, pulleys, idlers and more.



Features:

- Tremendous de-icing ability
- Outperforms antifreeze
- Long staying power
- Withstands temperatures to -50 °F
- Environmentally safe

Item No.	Mfr. No.	Size (gal)	Container
101841194	LH005	5	Pail
101841519	LH055	55	Drum
101510292	LH330	330	Tote





Ice-Off® Windshield Spray De-Icer



Features:

- Melts ice, snow and frost on contact
- Harmless to car finish
- Thaws frozen locks
- Effective to sub-zero temperatures

Container: Aerosol

Item No.	Mfr. No.	Size (oz)	Net Wt. (oz)
101850702	05346	16	12



Jump Start® Starting Fluid with Lubricity



Features:

- Ensures fast, economical starts in cold or humid conditions
- Contains an upper cylinder lubricant to minimize wear during cold starts
- Effective to -65 °F
- Complies with ULSD fuel requirements

Item No.	Mfr. No.	Size (oz)	Net Wt. (oz)
101943384	05671	16	11



Fan Forced Milkhouse Style Heater



Features:

- 1,300 W and 1,500 W heat settings, plus fan-only setting
- Temperature control thermostat
- Triple safety system: tip-over switch, automatic reset type limit control and thermal cut-off device

Compliances:

- ETL C/U.S. listed

Cord Length: 6 ft
Cord Type: SJT

Single Phase

Item No.	Mfr. No.	Volts	BTUs	Watts
101642531	188TASA	120	5,120	1,500



Portable Electric Infrared Heater

Fostoria's portable infrared heater utilizes a single flat panel emitter heating element for directional and safe indoor heat, when and where you need it. No fumes, flames or fan-forced air – ideal for high bay areas! Medium-Wave infrared elements operate at 78.5% radiant efficiency and have a life expectancy of 25,000 hours!



Features:

- Designed for indoor & semi-protected outdoor applications
- Heats up to a 500 sq. ft. area; 9500-Watts, 480V, generating more than 32,400 BTUs
- Single or three-phase wiring configurations
- Gold anodized aluminum housing, providing a 60° symmetrical heat pattern
- Made in the USA

Single Phase

Item No.	Mfr. No.	Volts	BTUs	Watts
112150512	FSP-9548-3	480	32,400	9,500



1500 Watt Portable Electric Heater



Features:

- Temperature control thermostat
- Dual safety system has tip-over switch and manual reset type limit control
- Three heat settings
- 6' long cord

Compliances:

- ETL C/U.S. listed

Single Phase

Item No.	Mfr. No.	Volts	BTUs	Watts
101643772	198TMC	120	5,120	1,500/900/600



Portable Electric Salamander Heater

Safe, indoor, portable heaters provide the climate control needed for interior jobs, without the threat of poisoning from combustion by-products given off by fuel/fire-type units.



Features:

- Safety yellow heater enclosure with safety screens on both air intake and output openings
- Long life finned tubular heating elements
- Thermostat adjustment 40 °F to 100 °F
- 800 cfm – 15 kW unit; 1100 cfm – 30 kW unit
- Three-phase electrical service
- Automatic reset
- High limit thermal cutout switch
- Fan only switch
- 10" wheels
- Designed for direct wire installation
- Made in the USA

Compliances:

- ETL C/U.S. listed

Three Phase

Item No.	Mfr. No.	Amps	Volts	kW	BTUs	Temperature Rise (°F)
101628535	FES15483E	18	480	15	51,195	45
101631819	FES30483A	36	480	30	102,390	90



Boss® Therm™ Heated Vest

This lightweight vest contains heating elements located on the chest and back, warming a large surface area to promote blood circulation, relief from muscle pain, enhance metabolism and improve immunity. It is designed to be worn as a base layer over a shirt, or any thermal garment.



Features:

- Includes durable two-way locking velcro straps
- Machine washable
- Designed to endure 50+ washing cycles
- Includes battery operated remote and initial battery
- Low, medium, high temperature ranges
- Rechargeable 5V power bank providing 8+ hours of warmth on single charge
- One size fits most
- Additional batteries available 399-HVBAT
- Replacement remote 399-HVRE

Color: Black
Material: Nylon
Weight: 2.71 lb

Item No.	Mfr. No.	Size
118615797	300-HV100	One Size



Ninja® Ice HPT Coated Gloves

Ninja® gloves are engineered to provide the highest level of innovation. Each of the offerings in the Ninja® series includes a unique shell and polymer combination incorporating the latest in hand protection technology. This Ninja® glove line offers the greatest assortment of dexterity, sense of touch and protection.



Features:

- Acrylic terry liner for insulation / warmth
- HPT repels liquids while providing strong wet or dry grip
- Coating remains soft in temperatures as low as -58 °F
- CE score 3232

Material: Nylon/Acrylic
Lining: Acrylic Terry
Coating: Black HPT Coated

Size	Coated Palm		Fully Coated	
	Item No.	Mfr. No.	Item No.	Mfr. No.
Medium	111185955	N9690M	111185996	N9690FCM
Large	111185956	N9690L	101676347	N9690FCL
2X-Large	111185952	N9690XXL	111186012	N9690FCXXL



Goatskin Leather Palm with Fabric Back and 3M™ Thinsulate™ Lining

Waterproof and windproof goatskin leather palm gloves are ideal for cold weather work, heavy / light construction, auto repair, manufacturing, mining, fabrication and more.



Features:

- Soft and abrasion-resistant goatskin leather palm is ideal for applications requiring tactile sensitivity
- 3M™ Thinsulate™ lining provides superior insulation without the bulk of fleece
- HIPORA® liner is waterproof, windproof and breathable
- PVC diamond grip on fingers and palm
- Neoprene pad offers added protection on the knuckles
- Inner knit wrist helps prevent dirt and debris from entering the glove
- Reflective stripes on back for added visibility in low-light
- Washable

Item No.	Mfr. No.	Size	U of M
112699240	120-4800/M	M	Pair
112699241	120-4800/L	L	Pair
112699239	120-4800/XL	XL	Pair
113043724	120-4800/XXL	XXL	Pair



PowerGrab™ Thermodex Hi-Vis Seamless Knit Glove with Latex MicroFinish Grip on Palm & Fingers

Napped nylon / polyester construction provides amazing warmth and an unmatched feel. A 13-gauge seamless liner produces a lighter and tighter knit design, ensuring superior dexterity and minimum hand fatigue.



Features:

- Water-repellent liner
- Latex MicroFinish® coating provides superior grip in dry / wet conditions
- Easy to see Hi-Vis coloring
- Extra coating in thumb area for added safety
- **WARNING:** Cancer – www.P65Warnings.ca.gov

Item No.	Mfr. No.	Size	U of M
118615540	41-1328/M	M	Pair
118615539	41-1328/L	L	Pair
118615542	41-1328/XL	XL	Pair
118615543	41-1328/XXL	XXL	Pair



Disposable Nitrile Glove, Powder-Free with Textured Grip



Features:

- 4 mil thickness, 100 gloves per box
- Economical puncture resistance with great comfort, dexterity and tactile sensitivity
- Textured grip provides a good grip in wet or dry environments
- Ambidextrous
- Powder-free for clean comfort and superior tactile sensitivity
- Contains no natural rubber latex proteins
- Complies with FDA food handling requirements 21 CFR 177.2600
- Industry grade – for non-medical use

Item No.	Mfr. No.	Size	Color	U of M
111660259	63-532PF/S	S	Blue	Box
111660260	63-532PF/M	M	Blue	Box
111660261	63-532PF/L	L	Blue	Box
111660228	63-532PF/XL	XL	Blue	Box



ANSI Type R Class 3 Soft Shell Jacket



Features:

- Water-resistant fabric with breathable membrane
- 8.85 oz polyester fleece
- Zipper closure
- Two waist pockets with zipper closure
- Chest pocket with waterproof zipper
- 2" segmented reflective tape
- 50+ UPF sun protection

Item No.	Mfr. No.	Size
119572993	333M6979T-YEL/L	L
119572996	333M6979T-YEL/XL	XL
119572990	333M6979T-YEL/2XL	2XL





ANSI Type R Class 3 Reversible Puffer Jacket



Features:

- Durable waterproof 300D polyester oxford shell with PU coating
- Quilted with polyester wadding for added warmth
- Reversible to black
- Two front waist in-seam pockets and two hand warmer pockets on reverse side
- 2" reflective tape
- 50+ UPF sun protection

Item No.	Mfr. No.	Size
119572979	333M6350H-YEL/L	L
119572982	333M6350H-YEL/XL	XL
119572976	333M6350H-YEL/2XL	2XL



ANSI Type R Class 3 Full Zip Hooded Sweatshirt with Black Bottom



Features:

- 10 oz polyester fleece
- Zipper closure
- Water-repellent shell treatment
- 2" silver reflective tape
- Black bottom and cuffs to help hide dirt
- Front hand warmer pockets
- One left zippered chest pocket

Item No.	Mfr. No.	Size
112054644	323-1370B-LY/L	L
112428875	323-1370B-LY/XL	XL
113044375	323-1370B-LY/2XL	2XL



N-Ferno® Hand and Foot Warming Pack



Self-contained packs activate when exposed to air.

Features:

- To activate, just open the pack
- All-natural ingredients heat up when they contact oxygen
- Hand style warms up to eight hours
- Foot style warms up to seven hours

Item No.	Mfr. No.	Warming Hours	Color	U of M	Pkg. Qty.
101609343	16990	Up to 12 Hours	White	Each	40
113907344	16995	Up to 6 Hours	White	Each	20
118794691	16997	Up to 12 Hours	White	Each	40



Zip On / Off Winter Liner with FR Treated Outer Shell



Features:

- Two layers – cotton twill / acrylic
- Flame-retardant treatment on outer shell, up to ten washes
- Zip on / off extended neck cover
- One size fits most

Item No.	Mfr. No.	Color
105364186	365-1620	Navy Blue



Thermal EXO Dual Layer Balaclava



Features:

- Solar-activated, dual-layer balaclava provides form-fitting comfort and protection from extreme weather conditions, sealing out the cold, wind and snow
- Soft, breathable mesh inner layer, nylon / spandex outer layer
- Dual functionality, combine both face layers in cold climates or pull the outer layer down exposing the inner layer when less insulation is required
- Wear as a ski mask, neck gaiter or a full-face mask
- Machine washable

Item No.	Mfr. No.	Color	U of M
117373490	364-1195	Black	Each



2-Layer Cotton Twill / Fleece Winter Liner with FR Treated Outer Shell



Mid-Length



Shoulder-Length

Features:

- Two-layer cotton twill / fleece
- Flame-retardant treatment on outer shell (one wash)
- Insulated ear barrier
- Navy blue with silver reflective strip
- One size fits most

Item No.	Mfr. No.	Type
110482502	363-1ML2FB	Mid-Length
110482505	363-1SL2FB	Shoulder-Length



Chill-Its® 6821 Balaclava

Features:

- 320 grams polyester fleece for warmth in extreme conditions
- Long length
- Reflective accent for higher visibility

Color: Black
Material: Polyester



Item No.	Mfr. No.
101614639	16821



Beanie LED Head Light



Features:

- USB rechargeable
- Three functions: high, medium, flash
- Run time: four hours
- Brightness: 150 lumens
- Warm and comfortable acrylic beanie
- Also available in yellow and gray

Item No.	Mfr. No.	Color	U of M
116167809	B029ORR	Orange	Each
115288816	B029BKR	Black	Each





Enduro® Pro Low Profile, High Performance, Multi-Function Headlamp

A low-profile multi-function headlamp featuring three lighting modes to cover a variety of tasks: spot beam for a focused beam, flood for soft area illumination that won't tire your eyes and red or green LEDs to preserve night vision.



Features:

- Uses 3 "AAA" alkaline batteries (included)
- High: 200 lumens; runs six hours
- IPX4 water-resistant; 2m impact resistance tested

Item No.	Mfr. No.	Battery Size	Bulb
113764155	61422	AAA	LED



Bandit® Ultra-Compact, Low-Profile USB Rechargeable Headlamp

The Bandit - a lightweight, low-profile headlamp designed just for you! It is USB rechargeable and provides 180 lumens of widespread white light.



Features:

- White LED with high, low, and emergency flash
- High: 180 lumens; runs two hours
- IPX4 weather-resistant; 2m impact resistance tested

Item No.	Mfr. No.	Bulb
113821421	61703	LED



DUALIE® 3AA Intrinsically Safe, Multi-Function Flashlight

Features:

- Three output modes: Spot, flood, both (spot and flood simultaneously):
 - » Spot: 140 lumens; 7,300 candela; 171m beam distance; runs 18 hours
 - » Flood: 140 lumens; 80 candela; 18m beam distance; runs 18 hours
 - » Simultaneous spot beam and flood beam: 245 lumens; runs nine hours
- Spot beam utilizes smooth parabolic reflector for tight beam with optimum peripheral illumination
- Flood beam produces a soft, wide beam to illuminate your work area
- Uses 3 "AA" alkaline batteries (included)



Item No.	Mfr. No.	Battery Size	Bulb
112971672	68750	AA	LED



Waypoint® Long-Range, Pistol-Grip Spotlight

The lightweight alkaline battery-powered Waypoint now shines brighter, producing 1,400 lumens with a far-reaching 1,265m beam.



Features:

- Three lighting modes: High, low, emergency signal
 - » High: 1,400 lumens; 400,000 candela; 1,265m beam; runs 3.25 hours
 - » Medium: 600 lumens; 165,000 candela; 812m beam; runs 7.5 hours
 - » Low: 38 lumens; 10,000 candela; 200m beam; runs 84 hours
- Emergency Signal: 82 hours
- Unlimited run time when using 12V DC power cord (included)
- Optimized electronics provide regulated intensity
- Unbreakable polycarbonate lens
- Trigger-style switch; secondary rotary switch for mode selection
- IPX8-rated design; waterproof to two meters; one-meter impact resistance tested
- Weight-balanced design virtually eliminates user hand fatigue

Item No.	Mfr. No.	Battery
111028778	44910	Lithium-Ion



STYLUS® PRO Alkaline Battery-Powered Pen Light



Features:

- White LED produces 100 lumens; 950 candela; 62m beam; runs eight hours
- IPX4 - water-resistant; 2m impact resistance tested
- About the size of a marker, it fits conveniently in your pocket - 5.3" (134 mm); 1.64 oz. (46.9 g)
- Uses 2 "AAA" alkaline batteries (included)

Item No.	Mfr. No.	Battery Size	Bulb
104480953	66118	AAA	LED



Industrial Alkaline Battery



Features:

- Designed for long-lasting performance in the widest range of device applications
- Broadest range of primary cell types and package configurations
- 6V/9V have a five-year shelf life and AA/AAA/C/D have a ten-year shelf life
- No added mercury
- An environmentally responsible battery that can be disposed of with regular trash
- Does not contain any ozone-depleting substances



Item No.	Mfr. No.	Cell Type	Voltage	Pkg. Qty.
102185916	EN92	AAA	1.5	24
102155951	EN91	AA	1.5	24
102185917	EN93	C	1.5	12
102167621	EN95	D	1.5	12



Outdoor Round Vinyl Extension Cord



Features:

- Solid molded plugs
- Made with stranded and cabled copper conductors
- Resists deterioration from moisture and abrasion

Amps: 15 A
Color: Orange
Cord Type: SJTW

Item No.	Mfr. No.	AWG	Length (ft)
101623057	860-528	12/3	25
101626785	860-529	12/3	50



Purell Healthcare Advanced Hand Sanitizer Gel



Features:

- Exceeds FDA healthcare personnel handwash requirements with just 1.1 milliliters of product
- Hypoallergenic, dermatologist tested
- Compatible with nitrile, vinyl and latex gloves
- Kills 99.99% of the most common germs that may cause illness
- Refill is easily recycled

Item No.	Mfr. No.	Description
105203285	3659-12	12 oz Pump
113817569	6463-02	12 mL Cartridge
113817550	6424-01	Sanitizer Dispenser



Clorox® Disinfectant Wipes

Features:

- One-step cleaning and disinfecting
- Bleach-free formula kills 99.9% of bacteria, including staph and salmonella



Item No.	Mfr. No.	Description
101680797	CL015949CT	Canister





Kleenex® Facial Tissue



Features:

- Soft, absorbent facial tissue
- Ideal tissue performance with attractive packaging and easy maintenance
- FSC certified
- Boxes have a signal feature that alerts you when it is time to change the box

Item No.	Mfr. No.	Description
110918720	21340	100 Count Box



TruShot 2.0® Multi-Surface, Restroom Cleaner & Disinfectant

Features:

- Multi-Surface, Restroom Cleaner & Disinfectant can be used on washable hard, non-porous surfaces of toilets, tubs, tile, walls, doorknobs, garbage cans, exterior appliances, tables, chairs, desks, and countertops
- Effective against a broad spectrum of bacteria, viruses, fungi and inhibits the growth of mold and mildew
- Sanitizes 99.9% of bacteria in 15 seconds on hard, non-porous, non-food contact surfaces
- Portable, no-spill, 10 fl. oz. cartridge
- Delivers up to 28 in-use quarts
- Requires no mixing, measuring or stopping
- Pre-labeled cartridges ensure you comply with OSHA workplace labeling compliance
- Use with the TruShot 2.0® Trigger Dispenser item #311981



TruShot 2.0® Trigger Dispenser

Features:

- Use with TruShot 2.0™ 10 fl. oz. cartridge concentrates
- A durable trigger dispenser system
- This rugged dispenser withstands repeated six ft. drops
- Trigger has been tested to last up to 250,000 pulls
- The onboard water reservoir holds ten fl. oz. and lasts 300 trigger pulls before refilling
- Portable, lightweight, and comfortable



Item No.	Mfr. No.	Description
118666355	315385	10 oz Concentrate
118666364	311981	TruShot 2.0 Trigger Sprayer



Scrubbing Bubbles® Multi-Purpose Disinfectant Spray

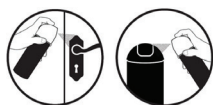
Features:

- Kills 99.9% of viruses†† and bacteria† on hard, non-porous surfaces
- Kills SARS-CoV-2 on hard, non-porous surfaces
- Temporarily reduces odor-causing airborne bacteria and neutralizes their odors
- Inhibits mold** and mildew on hard, non-porous surfaces
- Sanitizes hard, non-porous surfaces in 30 seconds
- Disinfects and deodorizes



Applications:

- Use this spray to disinfect & sanitize surfaces such as doorknobs & garbage cans
- Fights odors & inhibits mildew



Bacteria†: *Staphylococcus aureus* (Staph), *Salmonella enterica*, *Listeria monocytogenes*, *Enterococcus faecalis*, *Escherichia coli* (E. coli), *Enterobacter aerogenes*, *Campylobacter jejuni*, *Pseudomonas aeruginosa*.

Viruses††: Rotavirus, Respiratory Syncytial Virus, Influenza A (flu virus), Herpes Simplex Virus Types 1 and 2, Human Coronavirus, Parainfluenza A Virus Type 3, ^SARS-CoV-2.

Fungi: *Trichophyton interdigitale* (fungus that causes athlete's foot).

Item No.	Mfr. No.	Description
119433801	613104	12 Oz. Can (Case of 12)

Use pesticides safely. Always read label and product information before use.



AgroBac™ PURE FOAM Wash

Perfume-free and dye-free antimicrobial foam hand soap for food handling.



Features:

- Antimicrobial foam hand soap with benzalkonium chloride to clean the hands and kill many common foodborne bacteria when used as directed
- Perfume-free and dye-free
- Reduced transient bacteria on the hands from touching contaminated surfaces
- Hygienic cartridge

Applications:

- For general use and hygienic handwashing in food & catering environments, or any other workplace or public facility where a high standard of hand hygiene is required

Item No.	Mfr. No.	Description
114610813	AGB1L	1L Cartridge
114609962	AGB120TF	1.2L TouchFREE Dispenser Cartridge
114610814	AGB2LT	2L Cartridge



Cleanse Antimicrobial Dispenser

Features:

- For use in the industrial, commercial, healthcare and food service/processing markets
- Dispenser line features two different sizes:
 - » The small Cleanse Antimicrobial dispenser is for the one-liter cartridges
 - » The medium Cleanse Antimicrobial dispenser is made for the two-liter cartridges
- BioCote® Protected* - Dispenser buttons are exclusively protected with BioCote® - a silver-based antimicrobial agent that is incorporated into plastic components at the time of manufacture and inhibits the growth of a broad spectrum of bacteria and molds; BioCote® will not wear out or rub off and is effective for the lifetime of the dispenser button



TouchFREE Ultra Dispenser

Features:

- Compact designed, power efficient touchFREE dispensing system for use with SCJ Professional 1- & 1.2-liter foaming hand hygiene products

Item No.	Mfr. No.	Description
111794280	ANT1LDS	1L Cartridge Dispenser
111421685	TF2WHI	TouchFREE Ultra Dispenser W/Battery White
111794281	ANT2LDP	2L Cartridge Dispenser

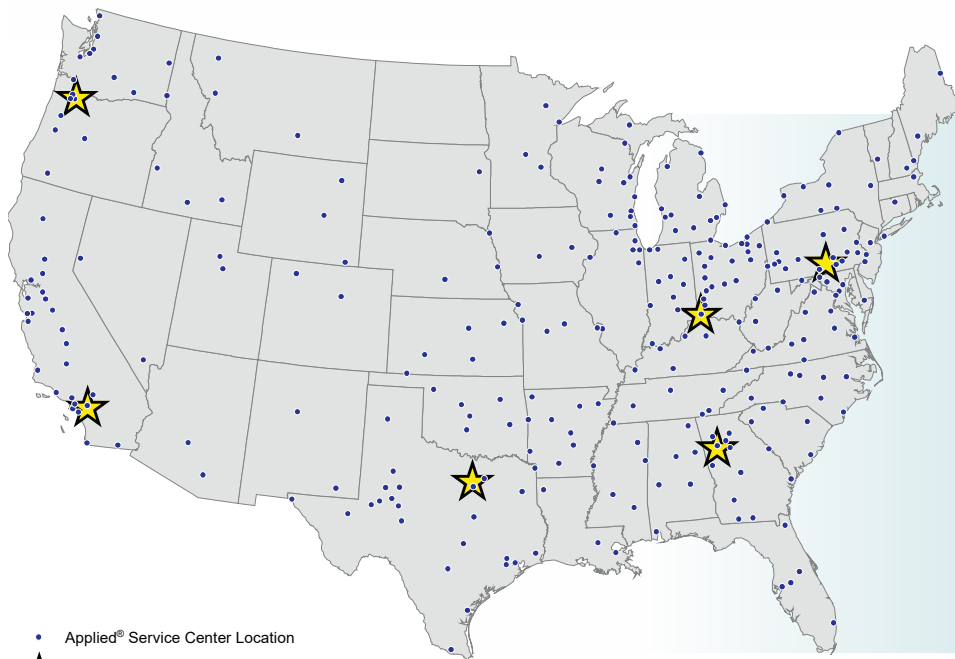
* BioCote® is a registered trademark of Biocote Limited



Winter Solutions Partners



Energizer



• Applied® Service Center Location



Applied® Distribution Center

Products, Services and Expertise

Applied Industrial Technologies is a leading value-added distributor and technical solutions provider of industrial motion, fluid power, flow control, automation technologies, and related maintenance supplies. Our leading brands, specialized services, and comprehensive knowledge serve MRO and OEM end users in virtually all industrial markets through our multi-channel capabilities that provide choice, convenience, and expertise.

The Applied® network of more than 570 facilities ensures that the part you need is always close by.

Contact Your Local Applied® Service Center
1-866-850-1866

Authorized distributor:



Corporate Headquarters
1 Applied Plaza
Cleveland, Ohio 44115
Toll Free Phone: 1-866-850-1866
Applied.com

DISCLAIMER: The above content is provided by the supplier. Applied® does not guarantee the accuracy or timeliness of the content. The above content is provided "AS IS", AND ANY AND ALL EXPRESS AND IMPLIED WARRANTIES OF MERCHANTABILITY AND FITNESS ARE HEREBY EXCLUDED. All warranties, if any, are solely from the supplier.